

May 12, 2022

Artizon Museum, Ishibashi Foundation

*The number of the works is updated.

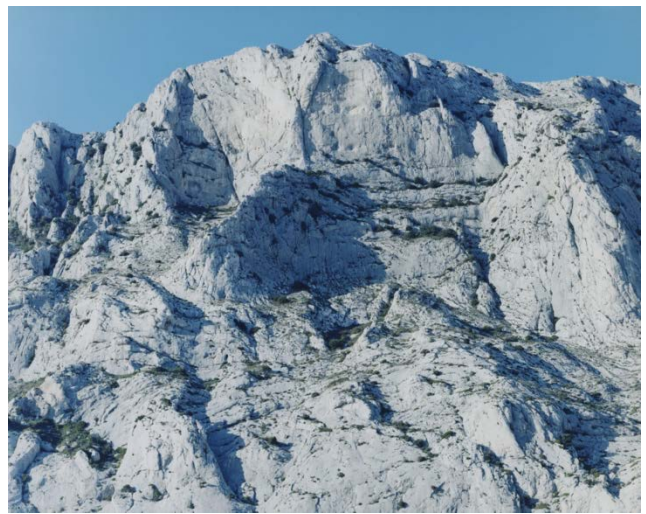
Photography and Painting: From Cézanne Shibata Toshio and Suzuki Risaku

Jam Session: The Ishibashi Foundation Collection × Shibata Toshio × Suzuki Risaku

April 29 [Fri.]—July 10 [Sun.], 2022



SHIBATA Toshio, *Obanazawa City, Yamagata Prefecture, 2018*



SUZUKI Risaku, *Sensation 09, C-58, 2009*

The Artizon Museum, Ishibashi Foundation (Director: Ishibashi Hiroshi), presents *Photography and Painting: From Cézanne Shibata Toshio and Suzuki Risaku Jam Session: The Ishibashi Foundation Collection × Shibata Toshio × Suzuki Risaku*.

Photography was invented and was popularized in the nineteenth century. At that same time, the Impressionists were a starting point in a series of major changes from what had been traditional painting styles. Photography played a considerable role in motivating those changes. Meanwhile, since its birth in the mid nineteenth century, the photograph has also sought to be treated as a work of art, in a painterly style, rather than a mere documentary record. That art photography mindset lives on today. The photographic works by Shibata Toshio and Suzuki Risaku, two contemporary artists, share a creative concept with modern art: expressing the human view of objects. This Jam Session thus pairs them with work by Paul Cézanne, whom they had been interested in since the very beginning of their careers, to explore the relationship between contemporary photography and painting.

This exhibition is composed of six sections. In four sections, both artists' works, including new works, are displayed with paintings from the Ishibashi Foundation Collection. In the Cézanne section and the Sesshu section, three artists' works are jointly presented. The exhibition includes more than 280 works: some 240 by Shibata and Suzuki, including 130 new or not yet displayed works, and forty from the collection.

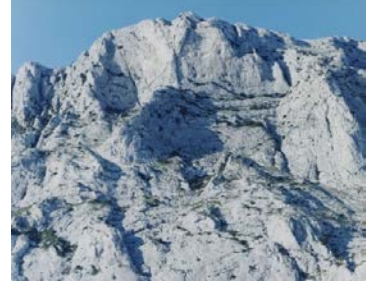
Exhibition Highlights



SHIBATA Toshio, *Okawa Village, Kochi Prefecture*, 2007, Collection of TOKYO PHOTOGRAPHIC ART MUSEUM



Paul Cézanne, *Mont Sainte-Victoire and Château Noir*, c. 1904-06, Artizon Museum, Ishibashi Foundation



SUZUKI Risaku, *Sensation 09, C-58*, 2009

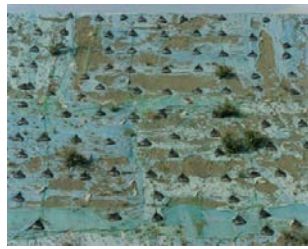
With dams, bridges, and other artificial structures in natural settings as his subject, Shibata Toshio captures the viewer's imagination by simplifying forms through his awareness of the relationship between his works and paintings and throwing the central motifs in sharp relief. Meanwhile, Suzuki Risaku addresses issues related to the way in which we see things by capturing subjects such as Mont Sainte-Victoire, Cézanne's studio, cherry blossoms, and snow through the mechanical perception of the camera.

Both Shibata and Suzuki have viewed Cézanne's attitude (as an artist who dared to manifest his own sense of vision while conforming to nature) and innovative approach as important points of reference since the beginning of their careers.

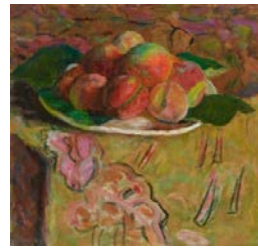
This exhibition highlights the uniqueness and charms of their photographic works by juxtaposing them with various painters' works in the Ishibashi Foundation Collection. While both focus on Cézanne, Shibata also deals with Fujishima Takeji, Henri Matisse, and Piet Mondrian; and Suzuki with Gustave Courbet, Claude Monet, and Pierre Bonnard.



Piet MONDRIAN, *Dune*, 1909, Artizon Museum, Ishibashi Foundation



SHIBATA Toshio, *Minobu Town, Yamanashi Prefecture*, 2021



Pierre BONNARD, *Peaches*, 1920, Artizon Museum, Ishibashi Foundation



SUZUKI Risaku, *Still Life 21, ST-127*, 2021

Shibata Toshio

Born in Tokyo in 1949, Shibata completed the oil painting graduate program at Tokyo University of the Arts, then entered the photography course at the Royal Academy of Fine Arts in Gent, Belgium, and began his full engagement in photography. Using a large format camera, he photographs landscapes with built structures, including dams and concrete retaining walls, publishing his work as detailed black-and-white prints. He also began working in color in the 2000s, expanding his expressive range. His work is in many museum collections in Japan and abroad.

Suzuki Risaku

Born in Shingu, Wakayama prefecture, in 1963. Graduated from the Tokyo College of Photography Research Department. In 1998, he published KUMANO, his first photo book, composed of sequences on the subject of visualizing points of view moving from here to there, shifting settings, and temporal change. Consistently making an analytic focus on the act of seeing as the basis of his work, he continues to photograph on themes that include Kumano, Mont Sainte-Victoire, cherry trees, snow, flowers, portraits, and the water's surface. He presents his work in exhibitions and photo books.

The Ishibashi Foundation Collection

The Ishibashi Foundation Collection began as the personal collection of Ishibashi Shojiro, its founder, and is now owned by the Ishibashi Foundation, which continues those collecting activities. Presently consisting of about 3,000 works, the collection spans Western paintings, modern Japanese-style paintings, sculpture and ceramics from East and West, and Chinese and Japanese calligraphy and paintings, as well twentieth century and contemporary art.

Jam Sessions

The Jam Sessions embody “Experiencing Creativity,” the concept guiding the Artizon Museum. For Jam Sessions, artists and curators working together organize exhibitions with new works inspired by specific works in the Ishibashi Foundation Collection and sessions in which the collection and the artist’s works interact to create new points of view. Our goal is a project that will be a bridge past and present and lead on to the future. The museum plans to hold a Jam Session every year.

Works on Exhibition

Shibata Toshio



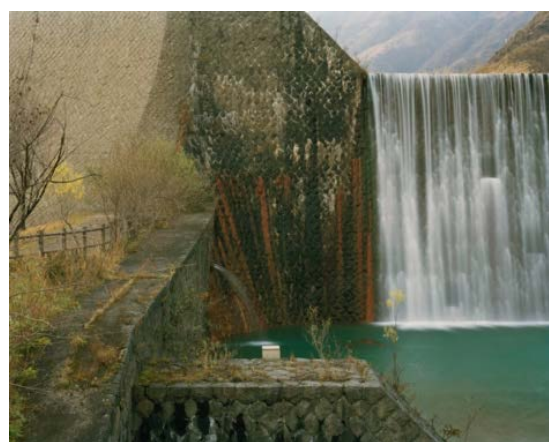
Hitachi City, Ibaraki Prefecture, 2008



Gent, Belgium, 1979



Nasushiobara City, Tochigi Prefecture, 2020



Nikko City, Tochigi Prefecture, 2013

Suzuki Risaku



Giverny 16, G-41, 2016



La plaque sensible 18, PS-434, 2018



Sensation 09, C-96, 2009



Apples 21, P-13, 2021

The Ishibashi Foundation Collection



SESSHU, *Landscape of the Four Seasons*, Muromachi period, 15th century, Artizon Museum, Ishibashi Foundation

Images for Press Use

If using only one image, choose one of the two from page 1.

Do NOT trim images or overlay them with text.

*All works for which no collection is listed belong to the artist.

Download image data for press use here:

<https://www.artpr.jp/artizon/shibatasuzuki2022>

Exhibition Overview

Exhibition title:	Photography and Painting: From Cézanne Shibata Toshio and Suzuki Risaku Jam Seshion: The Ishibashi Foundation Collection × Shibata Toshio × Suzuki Risaku
Organized by	Artizon Museum, Ishibashi Foundation
Venue:	Artizon Museum, 6F Gallery, a part of 4F Gallery
Exhibition period:	April 29 [Fri.] – July 10 [Sun.], 2022
Opening hours:	10:00 – 18:00 (until 20:00 on Fridays except April 29) *Last entry 30 minutes before closing.
Closed:	Mondays
Admission (incl.tax):	Timed entry system (Online booking starts from March 1, 2022) Online ticket: 1,200 yen Same day ticket (on sale at museum): 1,500 yen Students: Free entry (Advance online booking required.) *This admission fee gives visitor access to the concurrent exhibitions. *Same day tickets on sale at the museum are available only for time slots that have not reached full capacity. *Advance booking is not required for children up to junior high school age.

*The exhibition details are subject to change without notice.

Total number of works on exhibition: app. 280
Shibata Toshio: app. 150 works (70 of which are new or never before shown)
Suzuki Risaku: app. 90 works (60 of which are new or never before shown)
Works from the Ishibashi Foundation: app. 40

Curators:	SHIMBATA Yasuhide, UTSUMI Junya
Concurrent Exhibitions:	Transformation: Arts Crossing Borders in the 19th and 20th Centuries Selections from the Ishibashi Foundation Collection Special Section: Learning: Prints by Picasso and Miró

Artizon Museum
1-7-2 Kyobashi, Chuo-ku, Tokyo 104-0031, Japan
Tel. Domestic: 050-5541-8600 International: +81 47-316-2772 (Hello Dial)

Directions: 5 minutes on foot from JR Tokyo Station (Yaesu Central Exit); Tokyo Metro Ginza Line Kyobashi Station (No.6, 7 Exit); Tokyo Metro Ginza Line, Tozai Line, Toei Asakusa Line Nihombashi Station (B1 Exit)

For inquiries about this press release:
Artizon Museum Public Relations Group
E-mail: publicity@artizon.jp TEL: +81 3-6263-0132(Direct)
1-7-2 Kyobashi Chuo-ku Tokyo 104-0031